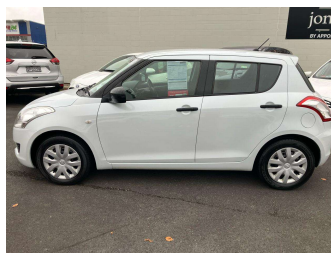


# 2011 Suzuki Swift GL 1.4 5DR



Purchase Price

**\$6,650**

Includes GST, Registration & Licensing

Finance may be available on this vehicle. Ask one of our friendly staff for more information.

**finance  
NOW**

Gain peace of mind with Mechanical Breakdown Insurance. **Ask us how.**

  
**ASSURANT®**

## Top features

None Listed

Body Style

**5 door, Hatchback**

Odometer

**198,756 km**

Engine

**1372 cc, Internal Combustion**

Fuel Type

**Petrol**

Transmission

**5-Speed Manual, Front Wheel**

Wheels

-

VIN

**JSAFZC82S00101852**

Interior

-

Safety



Based on 2025 UCSR rating for 11-17 models

Reg No.

**RTQ32**

Ext Colour

**White**

History

**NZ New, 4 owners**

Seats

**5 seats**

CO2 Emissions

★★★★☆

**147 grams/km**

Energy Economy

★★★★☆☆

**Annual fuel cost of \$2,390**

**6.1L per 100km**

Cost per year is an estimate based on petrol price of \$2.80 per litre and an average distance of 14000 km. Emissions and Energy Economy figures standardised to 3P WLTP.



Scan this QR code for more info

Stock ID: 7916

Est 2003  
**jones motoring**

Jones Motoring | Phone 03 453 4020 | Email [josh@jonesmotoring.co.nz](mailto:josh@jonesmotoring.co.nz)  
19 Factory Road, Mosgiel 9024, New Zealand  
[www.jonesmotoring.co.nz](http://www.jonesmotoring.co.nz)