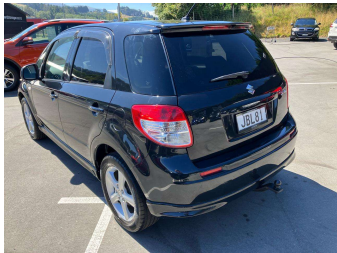
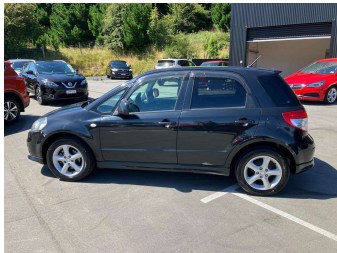
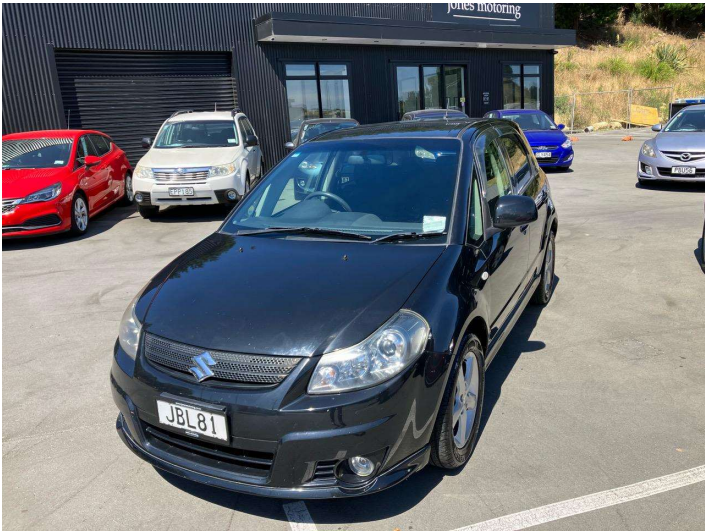


2009 Suzuki Sx4



Purchase Price

Includes GST, Registration & Licensing

\$8,550

Finance may be available on this vehicle. Ask one of our friendly staff for more information.



Gain peace of mind with Mechanical Breakdown Insurance. **Ask us how.**



Top features

None Listed

Body Style

5 door, Hatchback

Odometer

112,018 km

Engine

1490 cc, Internal Combustion

Fuel Type

Petrol

Transmission

4-Speed Auto

Wheels

-

VIN

7AT0GKG7X14201412

Interior

-

Safety



Based on 2024 UCSR rating for 07-14 models

Reg No.

JBL81

Ext Colour

Black

History

Ex-Overseas, 2 owners

Seats

5 seats

CO2 Emissions

★★★★☆

177 grams/km

Energy Economy

★★☆☆☆

**Annual fuel cost of \$2,980
7.6L per 100km**

Cost per year is an estimate based on petrol price of \$2.80 per litre and an average distance of 14000 km. Emissions and Energy Economy figures standardised to 3P WLTP.



Scan this QR code for more info
Stock ID: 7460

Est 2003
jones motoring

Jones Motoring | Phone 03 453 4020 | Email josh@jonesmotoring.co.nz
19 Factory Road, Mosgiel 9024, New Zealand
www.jonesmotoring.co.nz